

SCRIPT REFERENCE

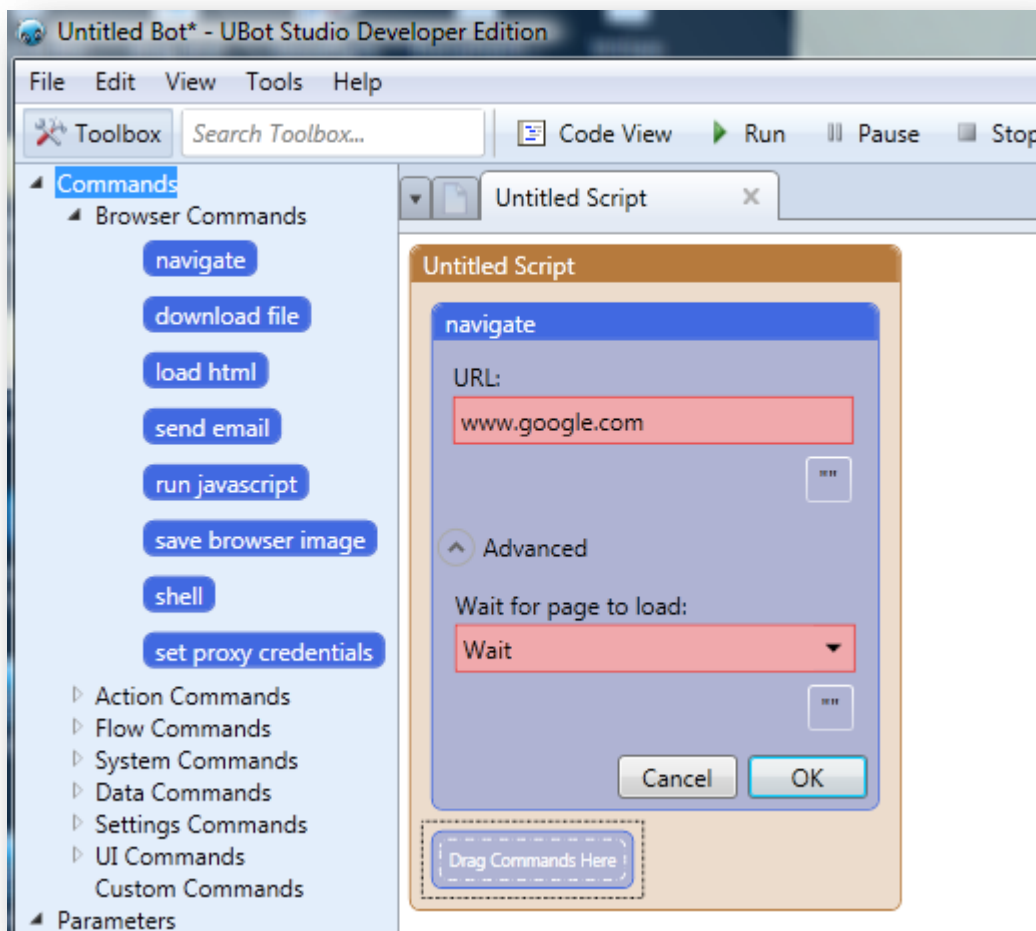
UBot Studio Version 4

The Browser Commands

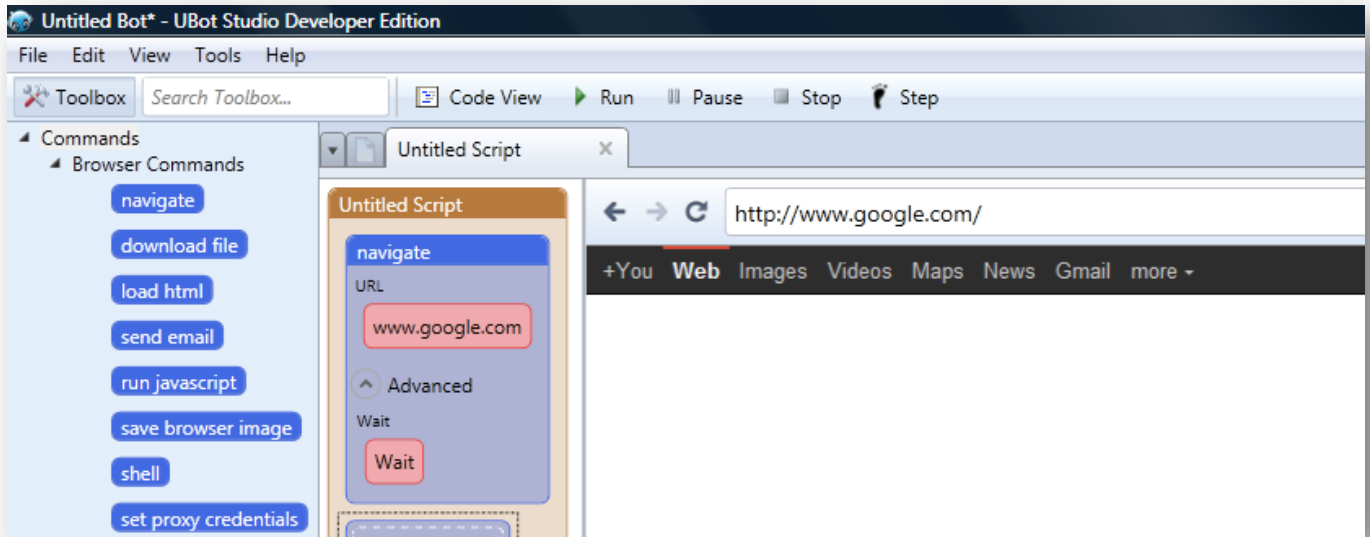
Navigate

This command will navigate to whatever url you insert into the url field within the command. In the section of the command labeled “Advanced”, you can select whether or not you want the page to load before moving on to the next command in your script by selecting “Wait” or “Don’t Wait”.

Simply drag the command into the scripting area, type in your url, and select whether or not you want the page to load before moving on to the next command.

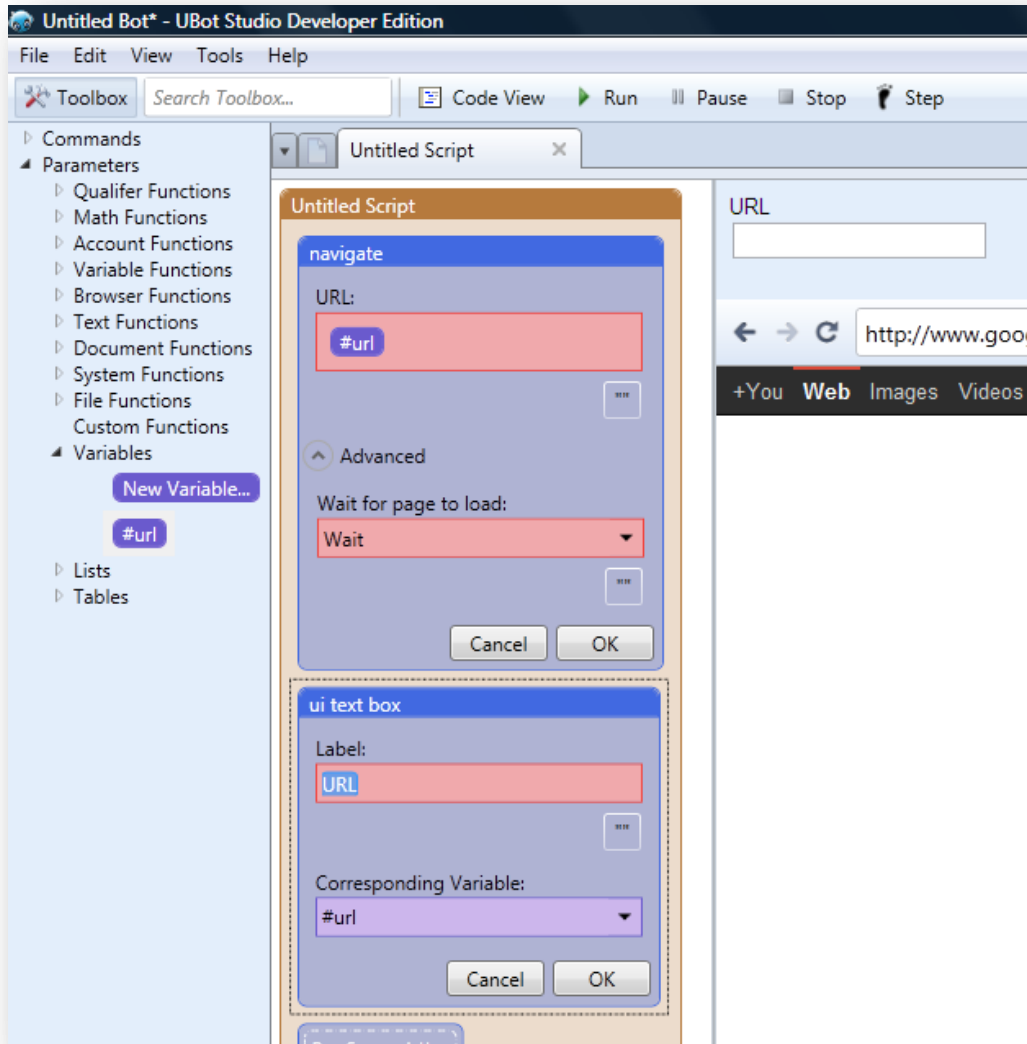


Click ok to exit editing, and run the script and your browser should navigate to the url you indicated in the Navigate command.



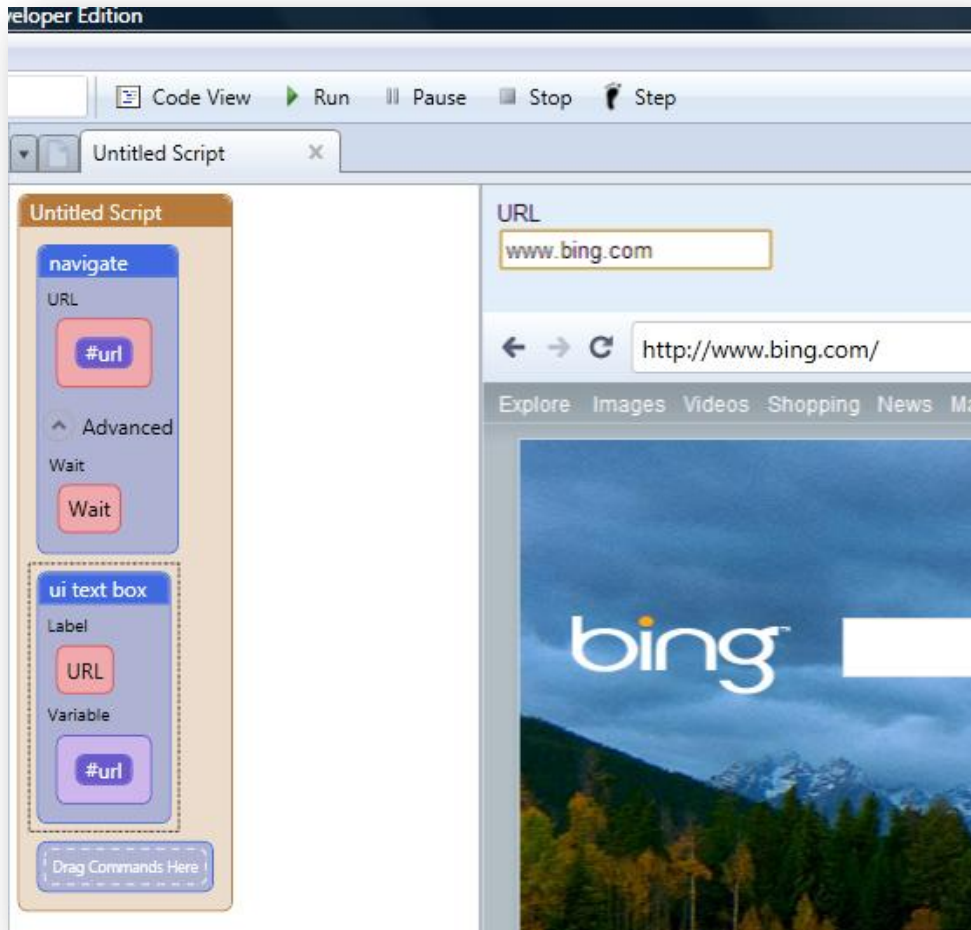
Another way to use the navigate command is with a UI text box command. This allows the end user of your bot to decide what website the navigate command will navigate to. Simply drag the UI command into the scripting area, label your field and name your variable for the command.

After doing so, drag the navigate command into the scripting area. In the field in the command labeled URL, go to the Variables tab in your toolbox and drag in the variable for the UI command.

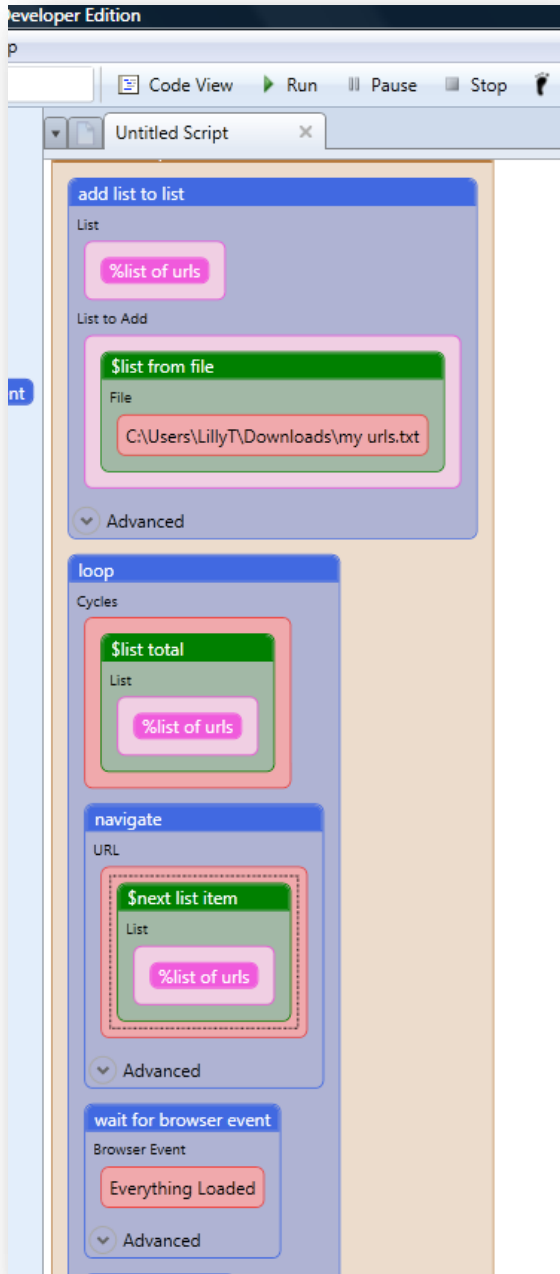


Click ok to finish editing after doing so.

Whatever url you type into the UI text box on the interface of the bot will be the url the navigate command navigates to in the browser.



Another way to use the navigate command, if you have a list of url you are trying to navigate to, is to place the list of urls into a list using the add to list command, and then place a next list item into the navigate command. You would then place the navigate command in a loop, which is set to loop according to the list total of the list of urls you are working with.



Do not forget to add a set list position command outside of the loop. In this case, the set list position command would go between the loop command and add list to list command.

When the script is run, the navigate command will navigate to each url on the list until the end of the list, and stop. Whatever tasks you need to perform on those websites can be done by adding commands after the navigate command, inside the loop.

Download File

This command will download a file from the url location you provide that has a file for downloading. In this example, we are downloading a .txt file from a url location and saving it to our desktop.

Simply start by dragging the download file command from the Browser commands in the tool box area. When you drag the command into the scripting area, two fields will appear. The field labeled “Download URL” is where your download url will go. In this example, our url is:

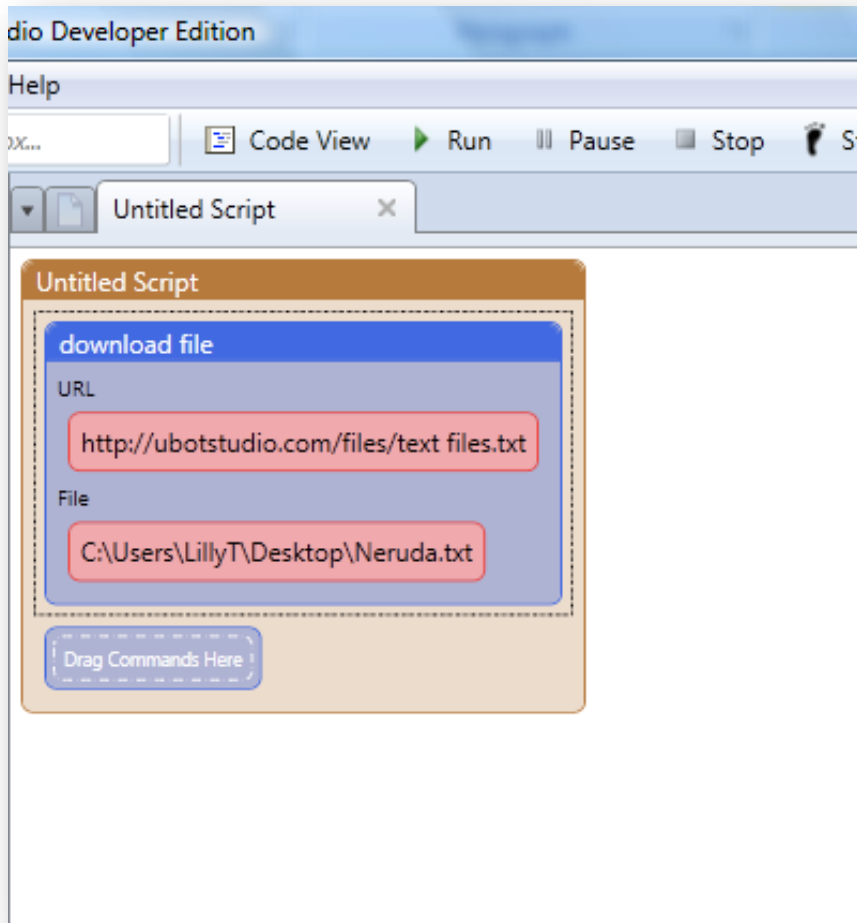
<http://ubotstudio.com/files/text files.txt>

The field labeled “Save As” is where your file name, along with your file path, will go.

In this example, we will be saving the file to our desktop with the name:

“Neruda.txt”

Once you’ve filled both fields, click ok on the command to exit editing.



When we check our folder for our desktop, we will find Neruda.txt downloaded onto the desktop and ready to open.

Load Html

This command will display whatever html code you place inside it in the browser window.

In this small example, we have our html below from http://w3schools.com/html/html_styles.asp

<html>


```
<body style="background-color:White;">
```

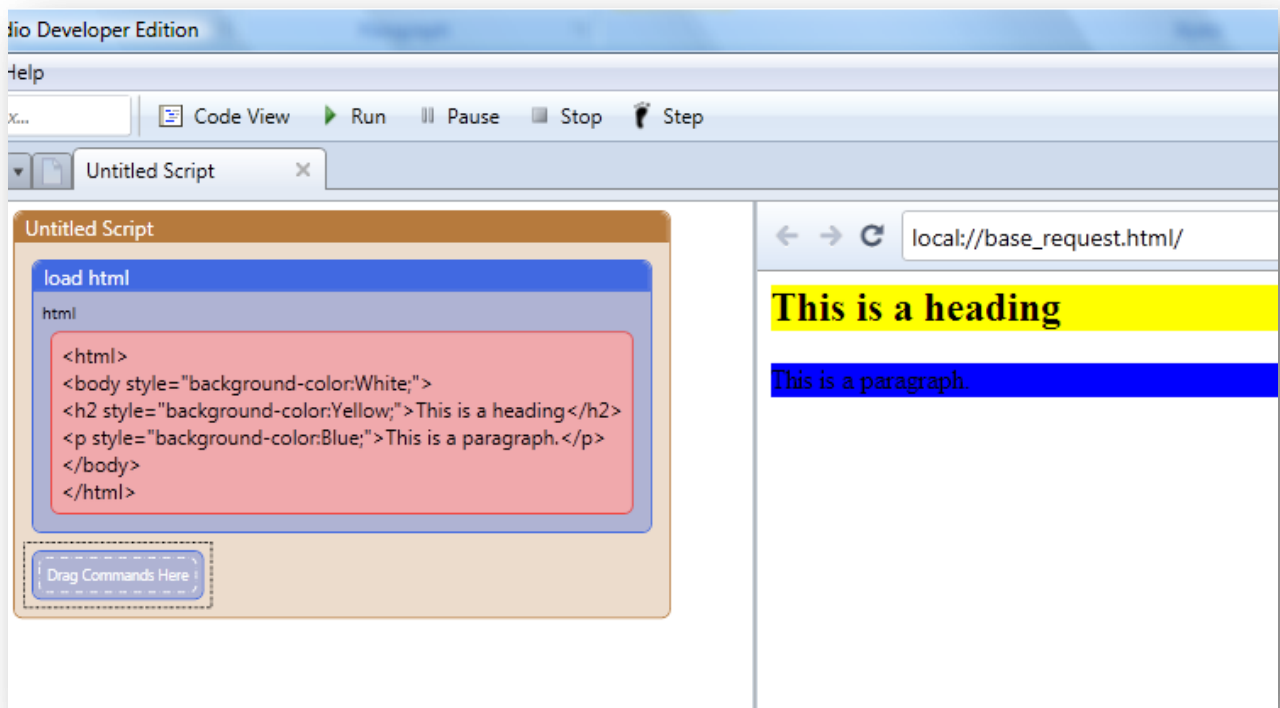
```
<h2 style="background-color:Yellow;">This is a heading</h2>
```

```
<p style="background-color:Blue;">This is a paragraph.</p>
```

```
</body>
```

```
</html>
```

Let's drag the load html command into the scripting area and insert this html code into the field in the command labeled "Enter html"



When we run the script, the html is translated into the browser area.

Send Email

This command will use the credentials for your server within the command to send an email to the recipient you designate within the command. The information you will need to provide in the command are the following:

Server: The mail server address. For example mail.mydomain.com

Username: The username you use to log into your email account on the mail server.

Password: The password you use to log into your email account on the mail server.

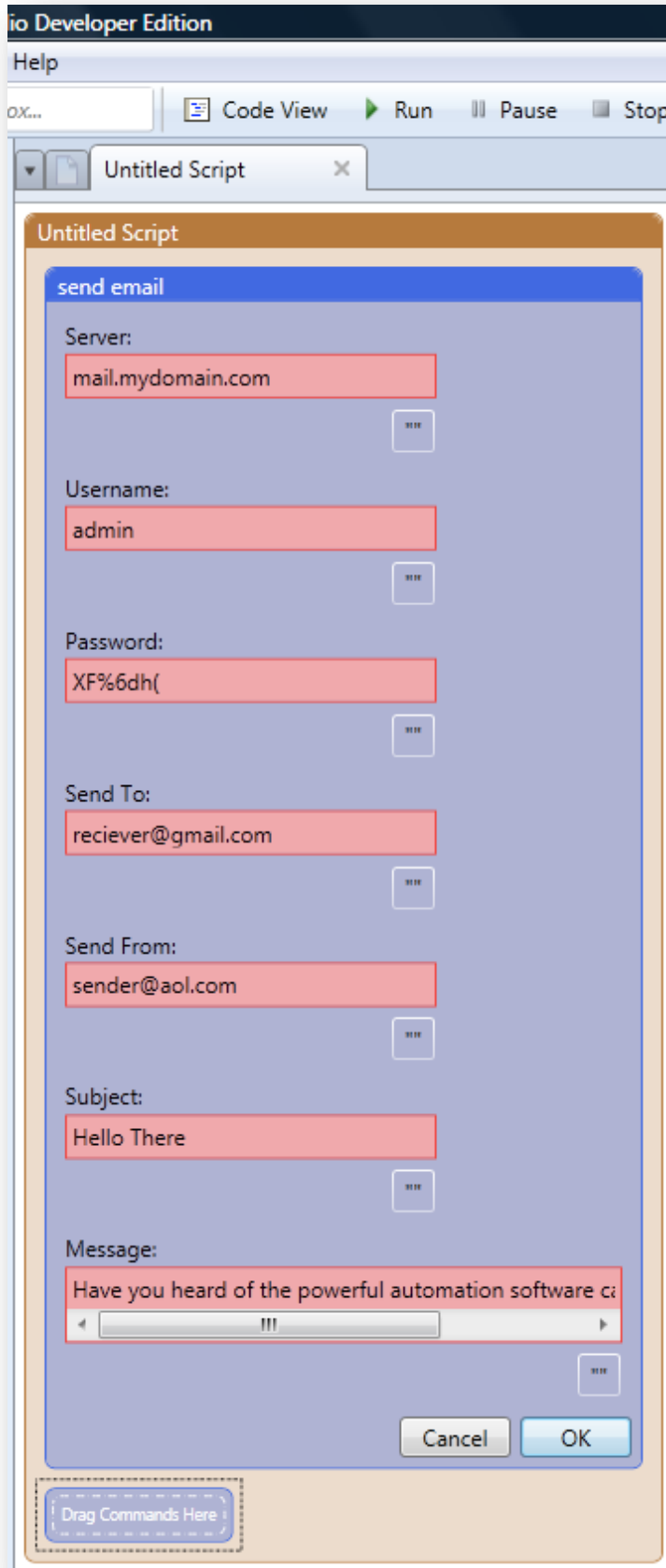
Send to: The email address you are sending the message to

Send from: The email address you would like to send the message from

Subject: The subject of your message

Message: The message you are trying to send.

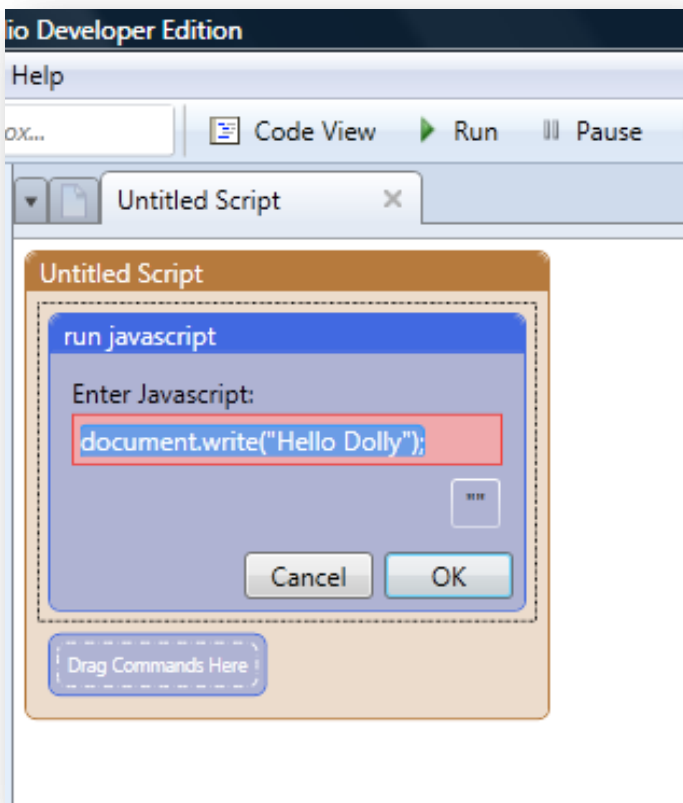
Below is an example of how the fields would be filled in the command to make sure your email is sent without issue:



Once you click ok to exit editing and run the script, the command will run and the email will be sent to the receiver. The Sender will be whatever email address you designated within the Send From field of the command.

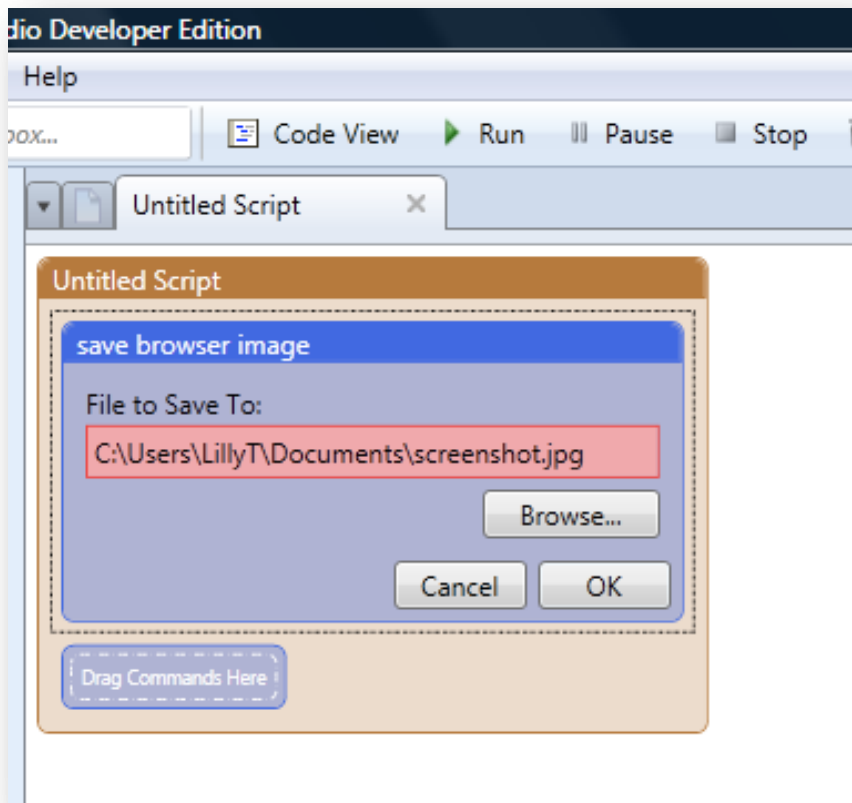
Run Javascript

This command will run whatever javascript you insert into it. Simply type in your javascript, click ok to exit editing, and run the script to run the javascript.

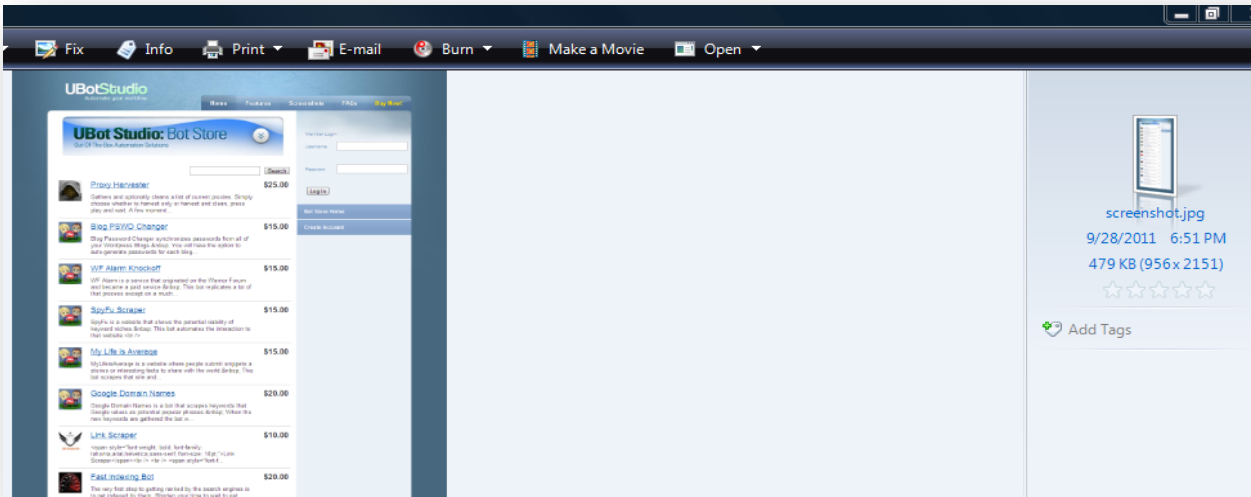


Save Browser Image

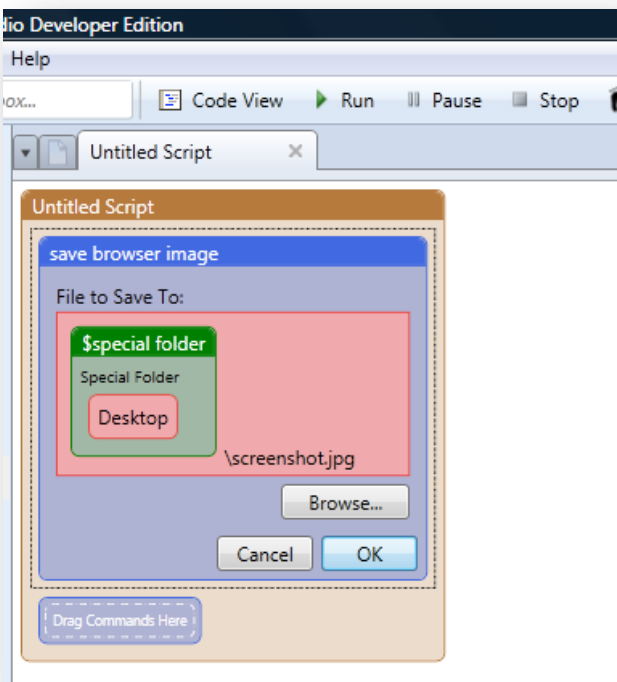
This command will take a screenshot of your current webpage and save it to a chosen location on your computer. Simply drag the command into the scripting area, and name your file along with a path file:



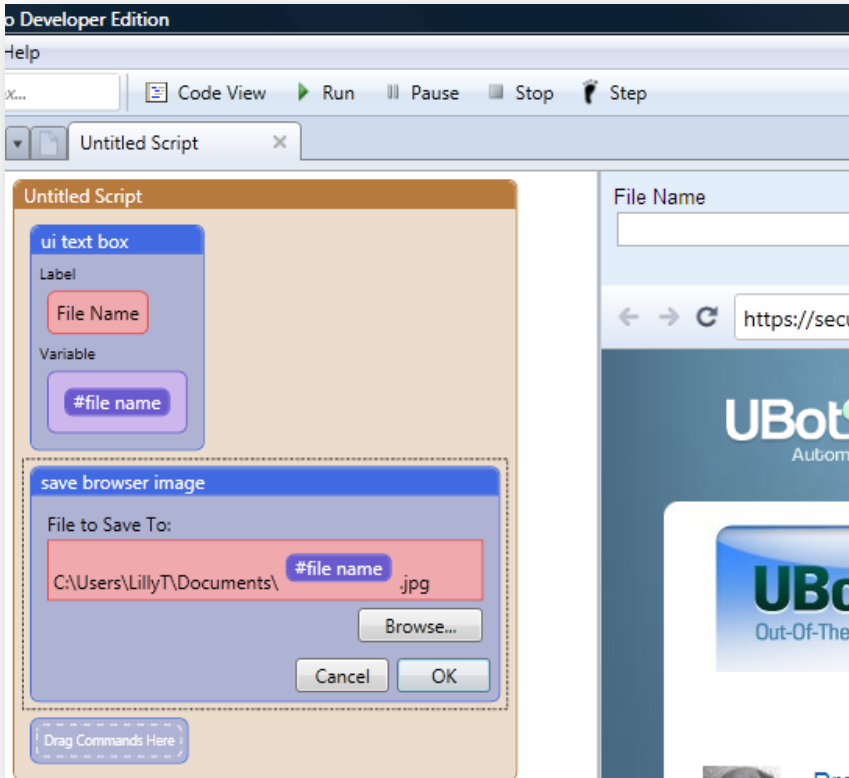
When you run the script, the script will grab a screenshot of the webpage you are on, and save the screenshot to the file path and with the file name you designated.



You can use the special folder function to designate the file location by replacing the “C:\Users\LillyT\Documents” portion of the file path with the special folder function with a chosen location like the desktop or your documents folder.



You can make the file name customizable by inserting the variable for the UI text box in place of the file name as seen below:

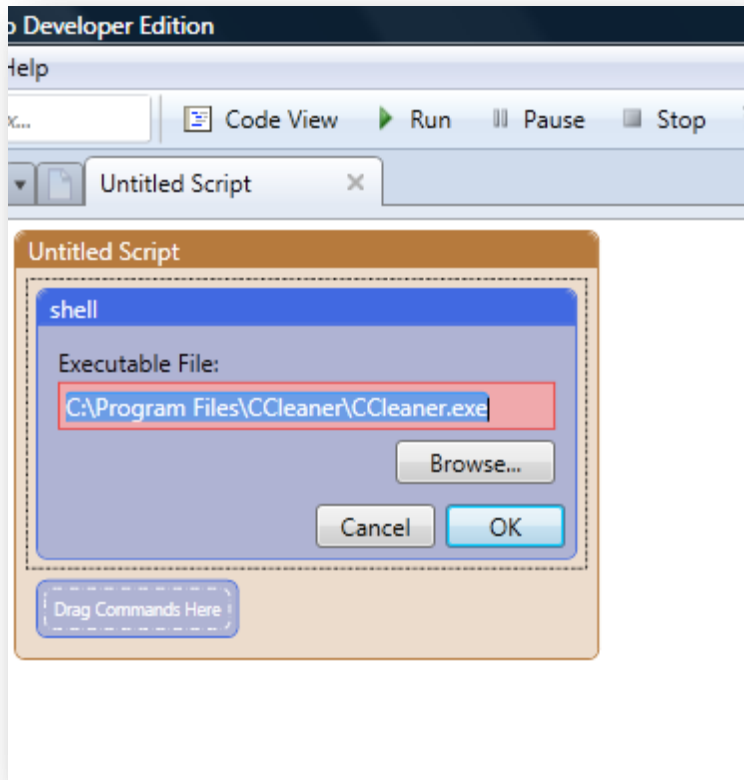


Whatever name you type into the UI text box will be the name of the screenshot you take.

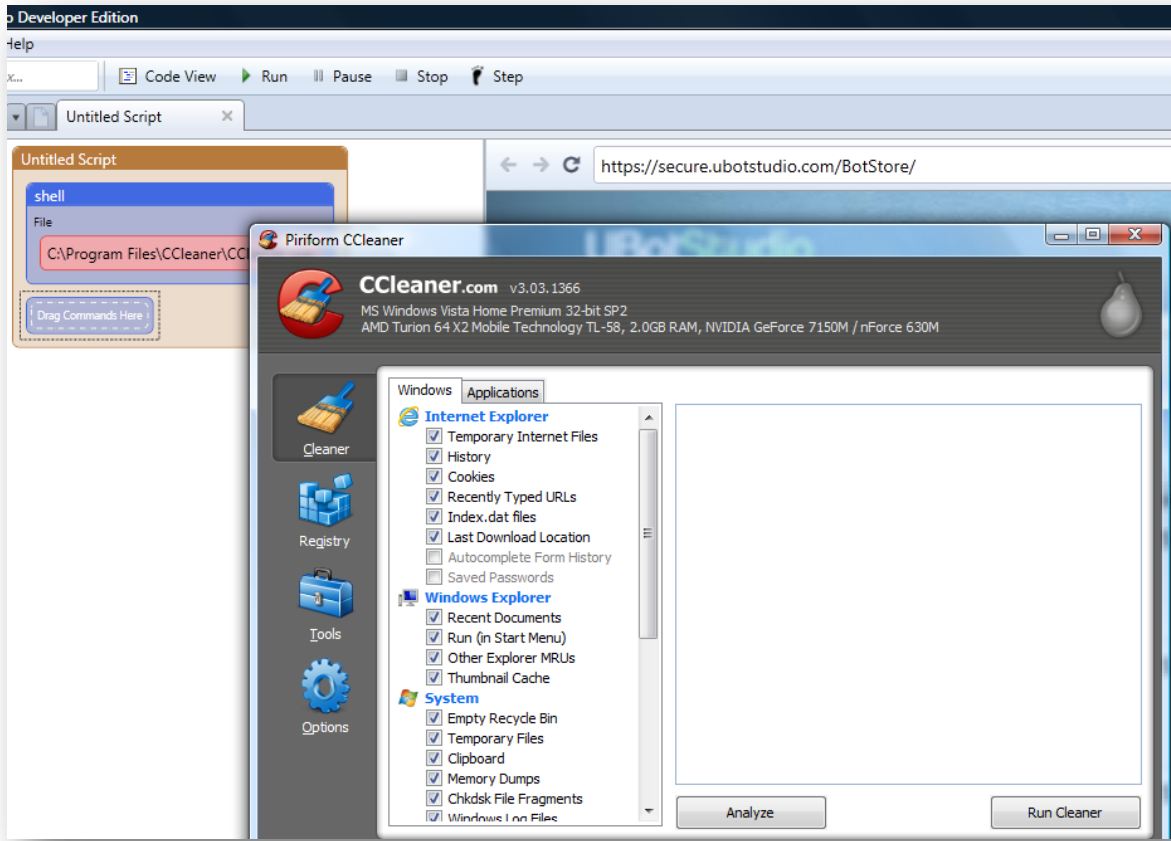
Shell

This command will run any executable program you place within it. In this example, we are going to be shelling a program called CCleaner.

Simply drag the command into the scripting area. Notice that the command allows you to brows your folders for an executable. We browse through our desktop folder and find the executable for CCleaner. The file path appears within the command after the executable is chosen from the file browsing window.



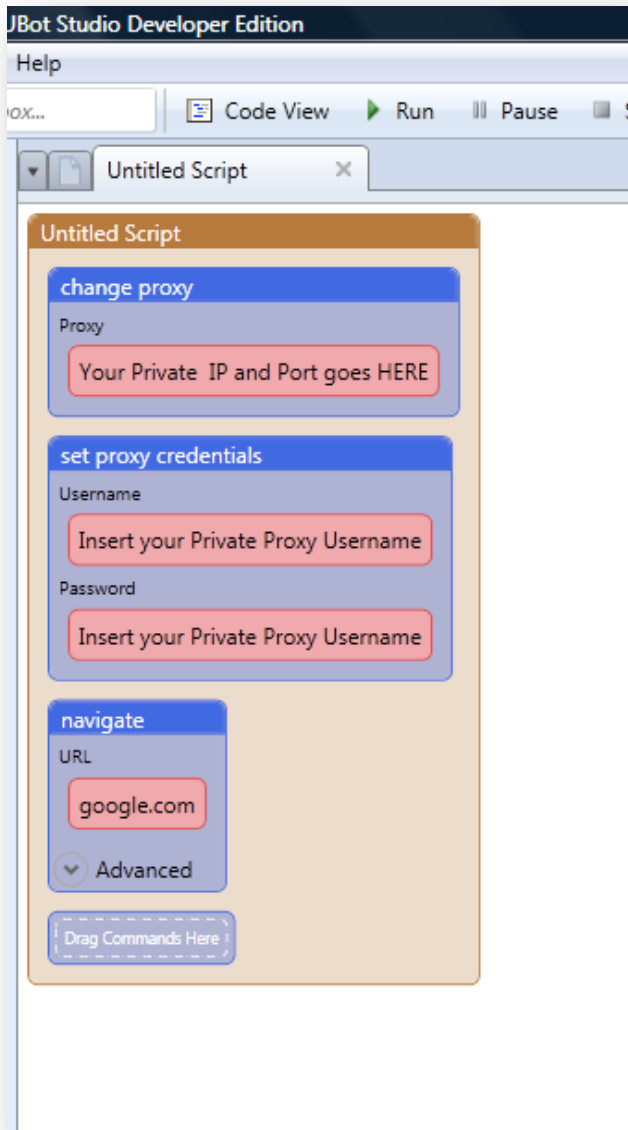
Click ok to finish editing. The program should load after you click the Run button on the program.



Set Proxy Credentials

This command is used along with the change proxy command when using private proxies that require authentication.

The picture below details how to arrange the set proxy credentials command with the change proxy command in order to authenticate your proxy before use.



The Change proxy command will be the first in the formation. Insert the private proxy Ip and port into the change proxy command. Afterwards, drag the set proxy credentials command into the scripting area and insert the username and password for your private proxy service into the areas designated.

Afterwards, you can add a navigate command to navigate to a website under the cloak of the private proxy.

